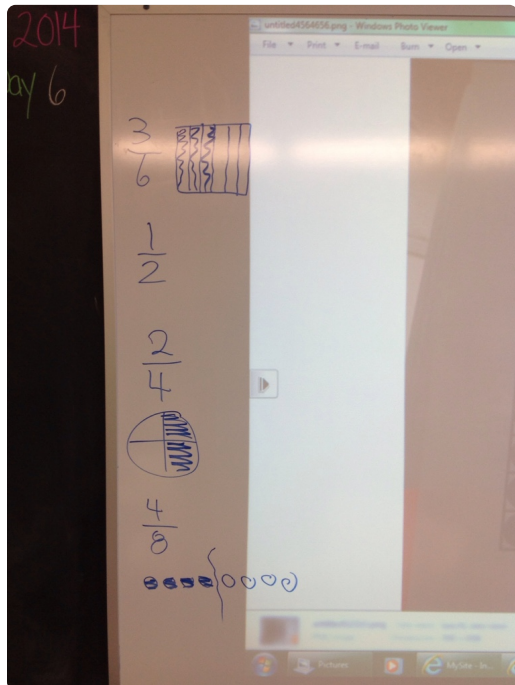
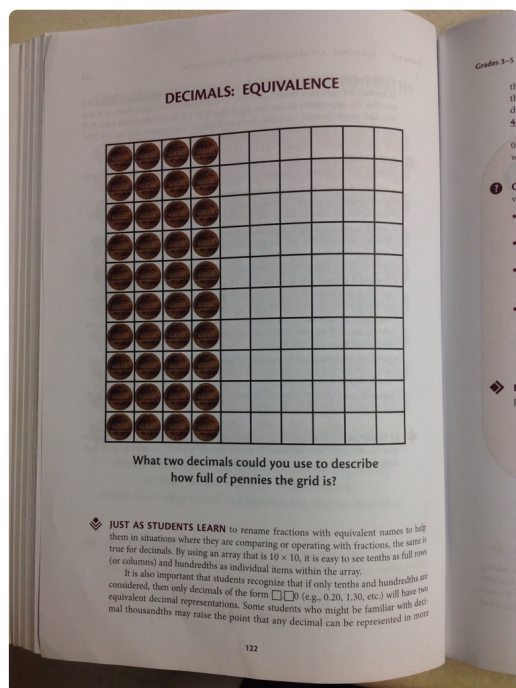
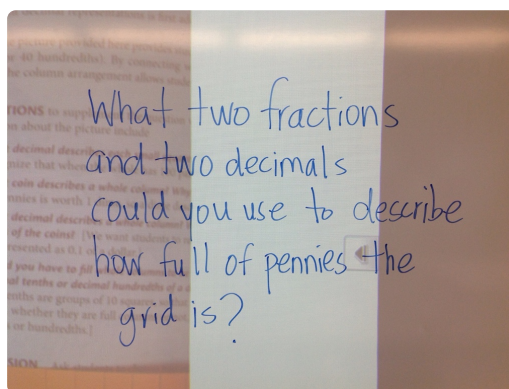


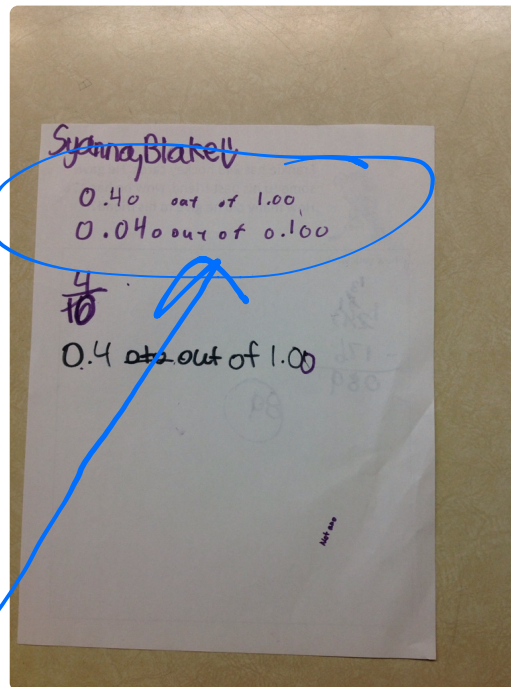
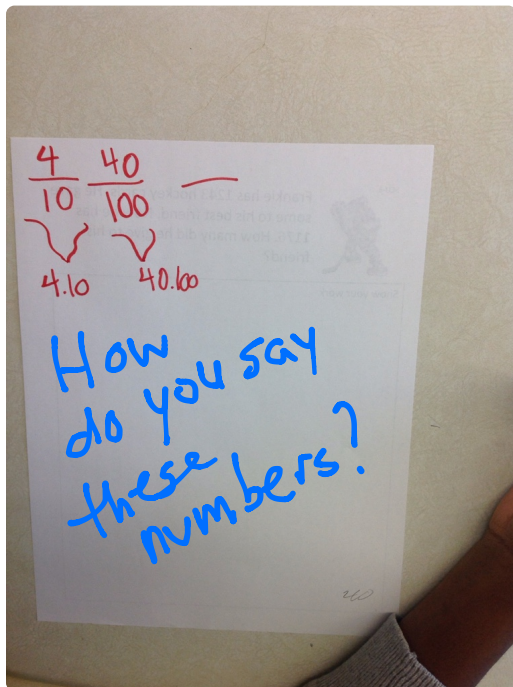
Minds On



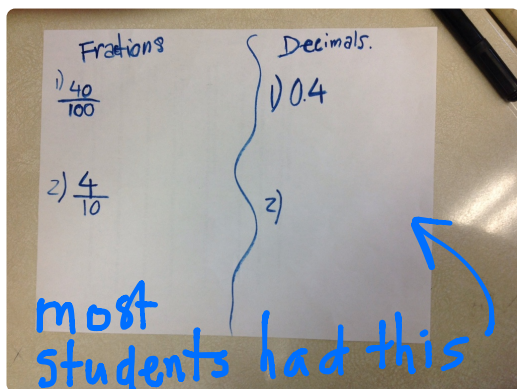
How many different ways can you show one half?



$\frac{4}{10}$. Students thought these fractions were shown
 $\frac{40}{100}$
 $\frac{20}{50}$ ← How does the picture show this?



Are these the same? No
Can the picture show both of these? No



$$\frac{40}{100} = 0.40$$

$$\frac{4}{10} = 0.4$$

Debrief

Students shared their fractions and decimals, used money to connect to their decimal representations

One student asked, aren't 0.40 and 0.4 the same?

Turn and talk, how are they the same and how are they different?

In terms of money, same amount, doesn't matter how many zeros...but in other contexts it matters. One student said that walking four out of ten days, is different than walking 40 out of one hundred days

They are different when it comes to representing the parts in relation to the whole, hundredths is different than tenths.

Day 2-Minds On



How do the flowers show 0.2 and 0.02?